

COMPOSITION:

Glassteel Dip and Chemical Bath Rollers are coated with a proprietary, highly corrosive resistant Glassteel coating that withstands harsh chemicals and cleaning agents without degrading. It's amorphous surface can be ground and polished to a desired finish to prevent snagging of fibers or damage to substrates.

PERFORMANCE BENEFITS:

Glassteel Dip, Sizing and Surface Treatment rollers and mandrels are used in the manufacturing and processing of Carbon Fiber, Prepreg Materials, Filaments, Fiberglass and Fabrics.

The Glassteel surface is highly corrosive and abrasive resistant and is easily maintained. Resin build-up is minimized. If necessary, resin build-up can be easily removed using acetone, dioxolane or other solutions without harming the coating surface.

The Glassteel coating can be finished "over the roll edge" for submersion in wash tank acids or other chemical treatments. It's inorganic, porous free surface won't breakdown and will significantly outlast metal, ceramic and chrome plated rollers. The Glassteel surface is very smooth to prevent snagging. The non-stick surface also functions well in laminating, stretching and finishing applications and when materials need to be removed from forming mandrels.

SPECIFICATIONS:

Corrosion Resistance	Excellent
Surface Finish	8 – 16 Ra
Diameters	2.0" – 24.0"
Face Length	Up to 140.0"
Abrasion Resistance	Excellent

FOR USE IN

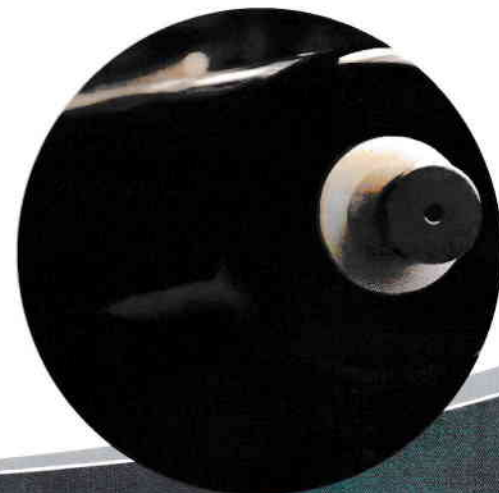
**Carbon Fiber,
Fiberglass and
Textile Processing**

**Chemical
Treatments and
Rinse Baths**

CALL US

**Speak with one of
our engineers call:**

585.924.2020



THE BEST COATINGS FOR YOUR MOST DIFFICULT APPLICATIONS