

COMPOSITION:

medEnamel Hygienic Rollers are coated with our proprietary sanitary and abrasive resistant *medEnamel* coating for use in the processing, conveying or manufacturing of medical and pharmaceutical packaging. The *medEnamel* coating is a homogeneous, inorganic coating that won't flake off like plasma sprayed coatings. It is non-reactive, even in environments with significant temperature variations, and will retain its non-stick properties throughout its lifetime while keeping finished products residue free.

PERFORMANCE BENEFITS:

medEnamel Hygienic Rollers are used in the manufacturing of medical & pharmaceutical packaging materials. The *medEnamel* coating produces a surface that is highly corrosive and abrasive resistant, is easily maintained, and does not degrade from the use of chemical or cleaning agents. If necessary, resin or substrate build-up can be easily removed using acetone, dioxolane or other solutions without harming the coating surface. The *medEnamel* coating can also be finished "over the roll edge" for a sanitary water-tight design. Its inorganic surface will not break down and will significantly outlast metal, ceramic and chrome plated rollers. *medEnamel* Hygienic Rollers can also withstand harsh environments where purity and cleanliness are most important.

Our *medEnamel* rolls are used in a wide range of converting processes, including paper processing, plastic sheet manufacturing, adhesive coating, and engineered film applications. We have the ability to engineer to your exact specifications while providing a product that ensures long life and minimal maintenance.

SPECIFICATIONS:

Thermal Conductivity	Excellent
Surface Finish	8 – 16 RA
Corrosion Resistance	Excellent
Face Length	Up to 136.0"
Abrasion Resistance	Excellent

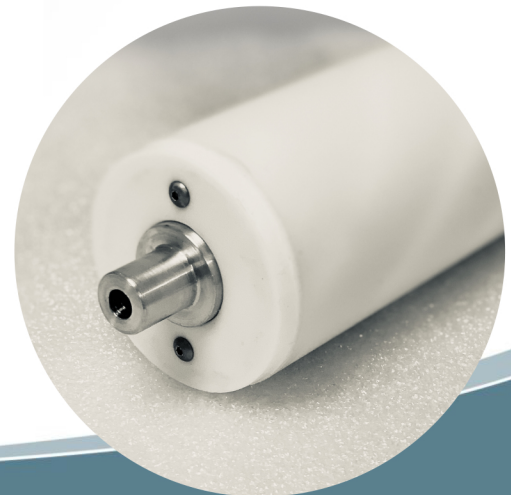
FOR USE IN

Conveying and
Manufacturing of
Medical and
Pharmaceutical
Packing Materials

CALL US

Speak with one of
our Engineers:
585.924.2020

medEnamel 



THE BEST COATINGS FOR YOUR MOST DIFFICULT APPLICATIONS

empirerollersandcoatings.com